

APARTMENT LOCATION  
IN THE BUILDING  
2<sup>TH</sup> - 6<sup>TH</sup> FLOOR

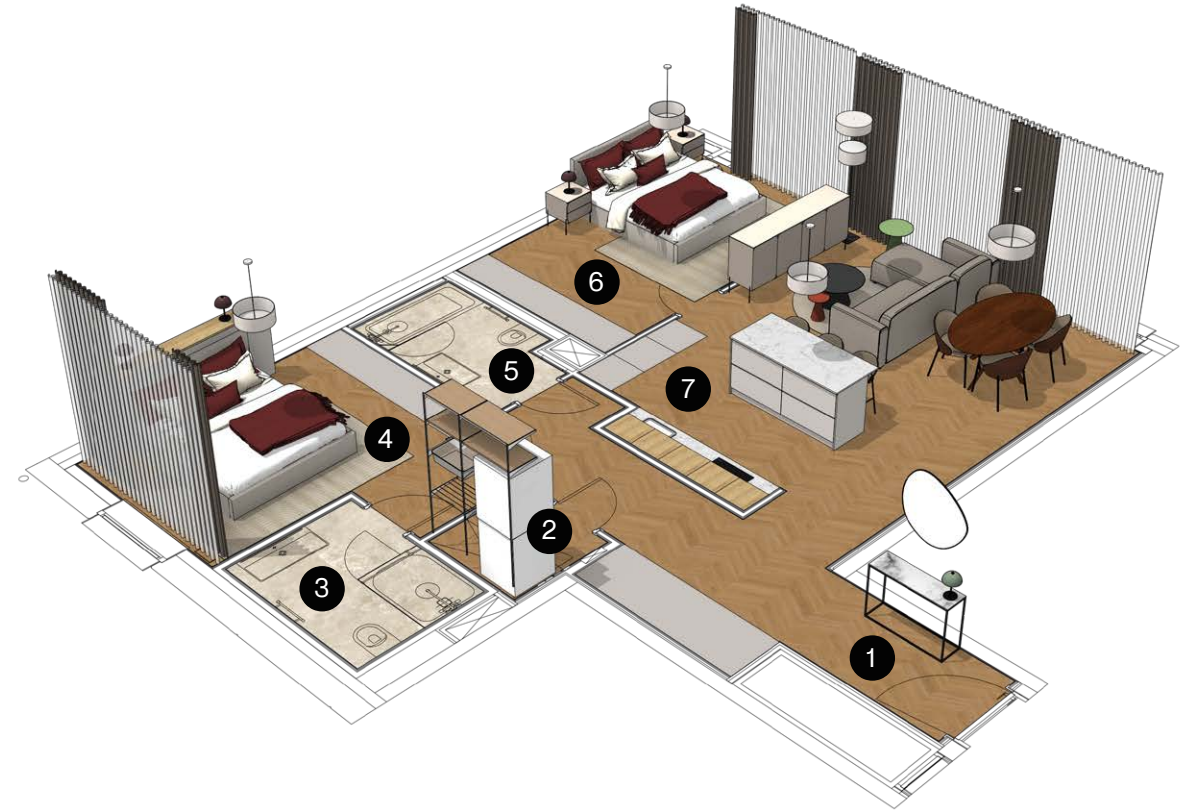


## 2-BEDROOM APARTMENT

### PARTIALLY FURNISHED APARTMENT FEATURES

- Fully fitted kitchen
- Day and night curtains
- Ceiling lighting and floor lamps
- Hallway wardrobe
- Bedroom wardrobe
- Washing machine and dryer

1	HALLWAY	13.16 m <sup>2</sup>
2	UTILITY ROOM	2.32 m <sup>2</sup>
3	BATHROOM 1	4.56 m <sup>2</sup>
4	BEDROOM 1	14.43 m <sup>2</sup>
5	BATHROOM 2	4.58 m <sup>2</sup>
6	BEDROOM 2	15.61 m <sup>2</sup>
7	GUEST ROOM & KITCHEN	30.72 m <sup>2</sup>
TOTAL AREA		85.38 m <sup>2</sup>



The furniture layout is for illustrative purposes.  
Please refer to the specification next for the  
details of the partially furnished apartment.