

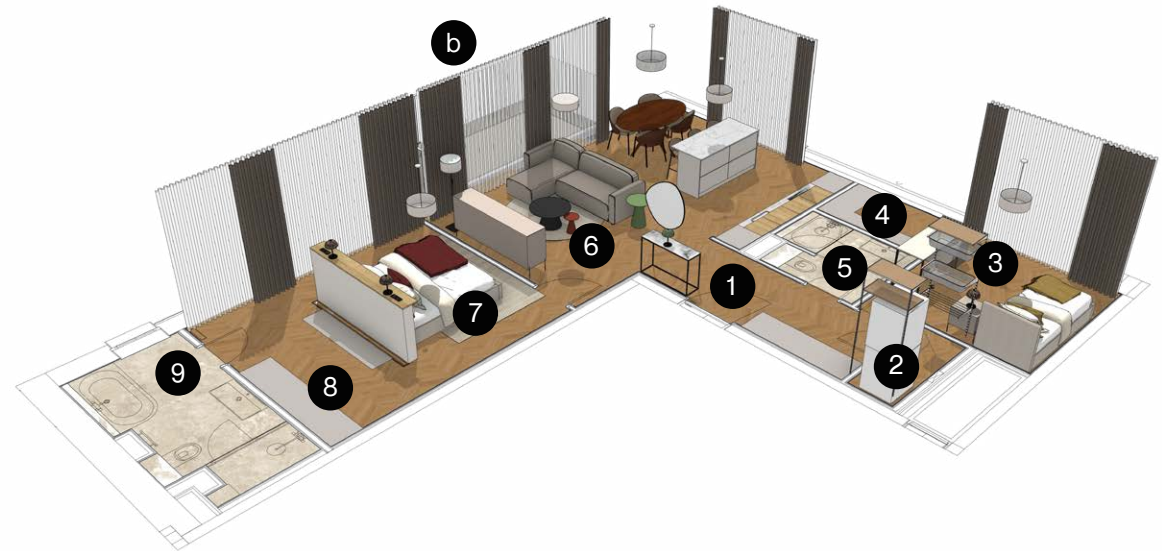
APARTMENT LOCATION  
IN THE BUILDING  
**2<sup>TH</sup> - 6<sup>TH</sup> FLOOR**

## 2-BEDROOM APARTMENT WITH BALCONY

### PARTIALLY FURNISHED APARTMENT FEATURES

Fully fitted kitchen  
Day and night curtains  
Ceiling lighting and floor lamps  
Hallway wardrobe  
Bedroom wardrobe  
Washing machine and dryer

<b>1</b> HALLWAY	7.21 m <sup>2</sup>
<b>2</b> UTILITY ROOM	1.91 m <sup>2</sup>
<b>3</b> BEDROOM 2	10.47 m <sup>2</sup>
<b>4</b> WARDROBE	3.50 m <sup>2</sup>
<b>5</b> BATHROOM 2	4.45 m <sup>2</sup>
<b>6</b> GUEST ROOM & KITCHEN	34.20 m <sup>2</sup>
<b>7</b> BEDROOM 1	12.67 m <sup>2</sup>
<b>8</b> WARDROBE	8.62 m <sup>2</sup>
<b>9</b> BATHROOM 1	7.92 m <sup>2</sup>
<b>b</b> BALCONY	9.50 m <sup>2</sup>
<b>TOTAL AREA</b>	<b>100.45 m<sup>2</sup></b>



The furniture layout is for illustrative purposes.  
Please refer to the specification next for the  
details of the partially furnished apartment.